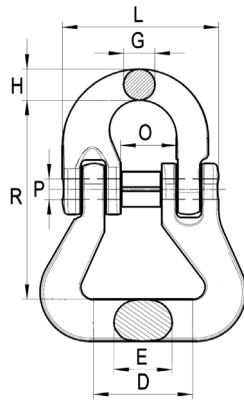
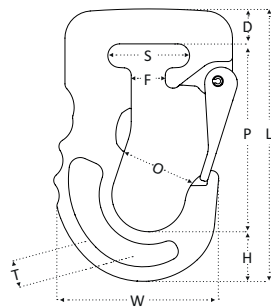


WCL Maille de connexion pour sangle (G10)



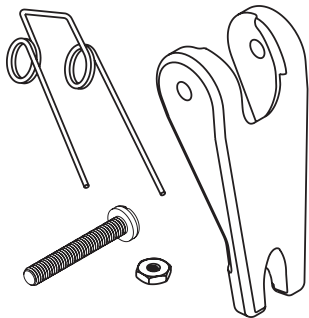
Type	CMU (kg)	D (mm)	E (mm)	G (mm)	Poids (kg/pce/m)	O (mm)	R (mm)	P x L (mm)	Poids (kg/st/m)	No.article
WCL-8	2.500	30	18	10	11.5	18	66	6.3 x 53	0.3	2683008
WCL-10	4.000	40	22	12.6	12.6	22.5	81	8 x 63	0.6	2683010
WCL-13	6.700	50	27.5	16.7	19	27.5	104	10 x 79	1.1	2683013

RWSH crochet à sangle avec linguet (G10)



Type	CMU (kg)	B (mm)	D (mm)	L (mm)	F (mm)	S (mm)	T (mm)	H (mm)	O (mm)	W (mm)	Poids (kg/pce/m)	No.article
RWSH-1	1.000	87	16	124	11.5	40.0	17	21	30	75.7	0.73	2652001
RWSH-2	2.000	103	18	148	18.5	44.5	21	27.0	39	90.0	1.27	2652002
RWSH-3	3.000	115	27	175	21.5	54.0	26	33	47	110.0	2.30	2652003

Linguet RWSH



Type	No.article
RWSH-8	2688501
RWSH-10	2688502
RWSH-13	2688503