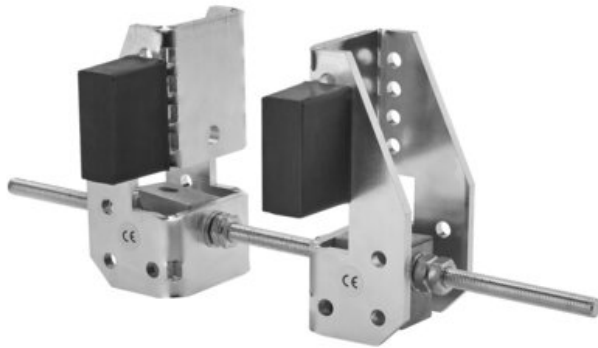


REMA beam buffers zinced

Product information

REMA adjustable buffers are applied to a monorail I / H profile track with a flat flange as an addition to your trolley-hoist system.
KB2 zinc coated

Marking: CE-marked



Part Code	GTIN No.	Model	Wheels diameter mm	Flange width mm	max flange thickness mm	Weight kg	Delivery time
4468300	8717365115110	KB2	60-160	82-300	7-25	2.5	3